

Paper Reference 9MA0/02
Pearson Edexcel
Level 3 GCE

Mathematics
Advanced
Paper 2: Pure Mathematics 2

Wednesday 12 June 2019 – Morning

Diagram Book

In the boxes below, write your name, centre number and candidate number.

Surname					
Other names					
Centre Number					
Candidate Number					

INSTRUCTIONS

There may be spare copies of some diagrams in case you need them.

**THIS DIAGRAM BOOK MUST BE RETURNED WITH THE
ANSWER BOOK AT THE END OF THE EXAMINATION.**

Contents

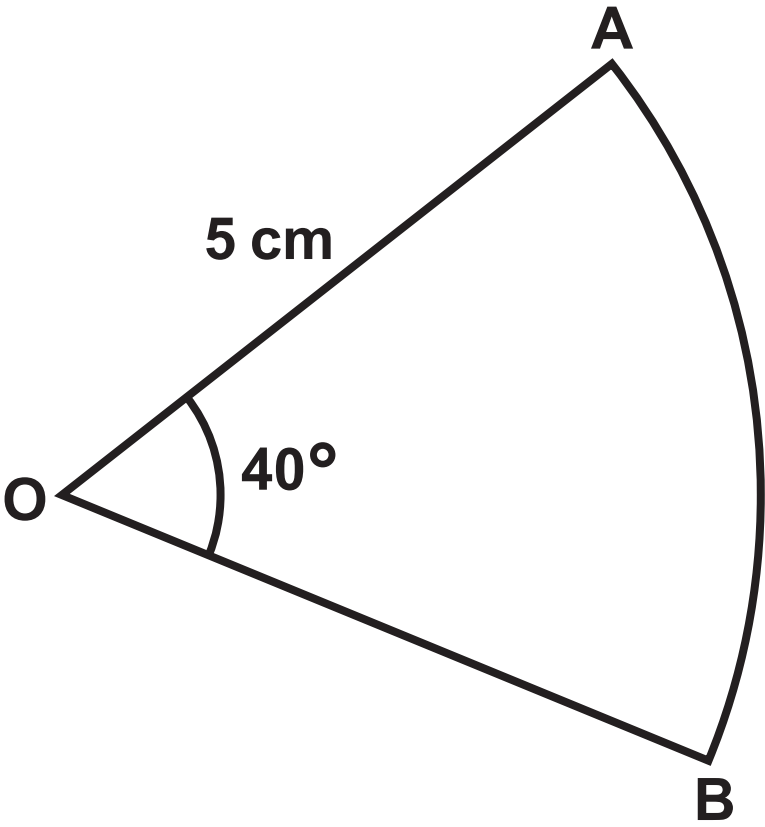
Page

4	Question 2
5	Question 3
6	Question 4
7	Question 5
8	Question 6
9	Question 9
10	Question 10
11	Question 11
12	Question 13

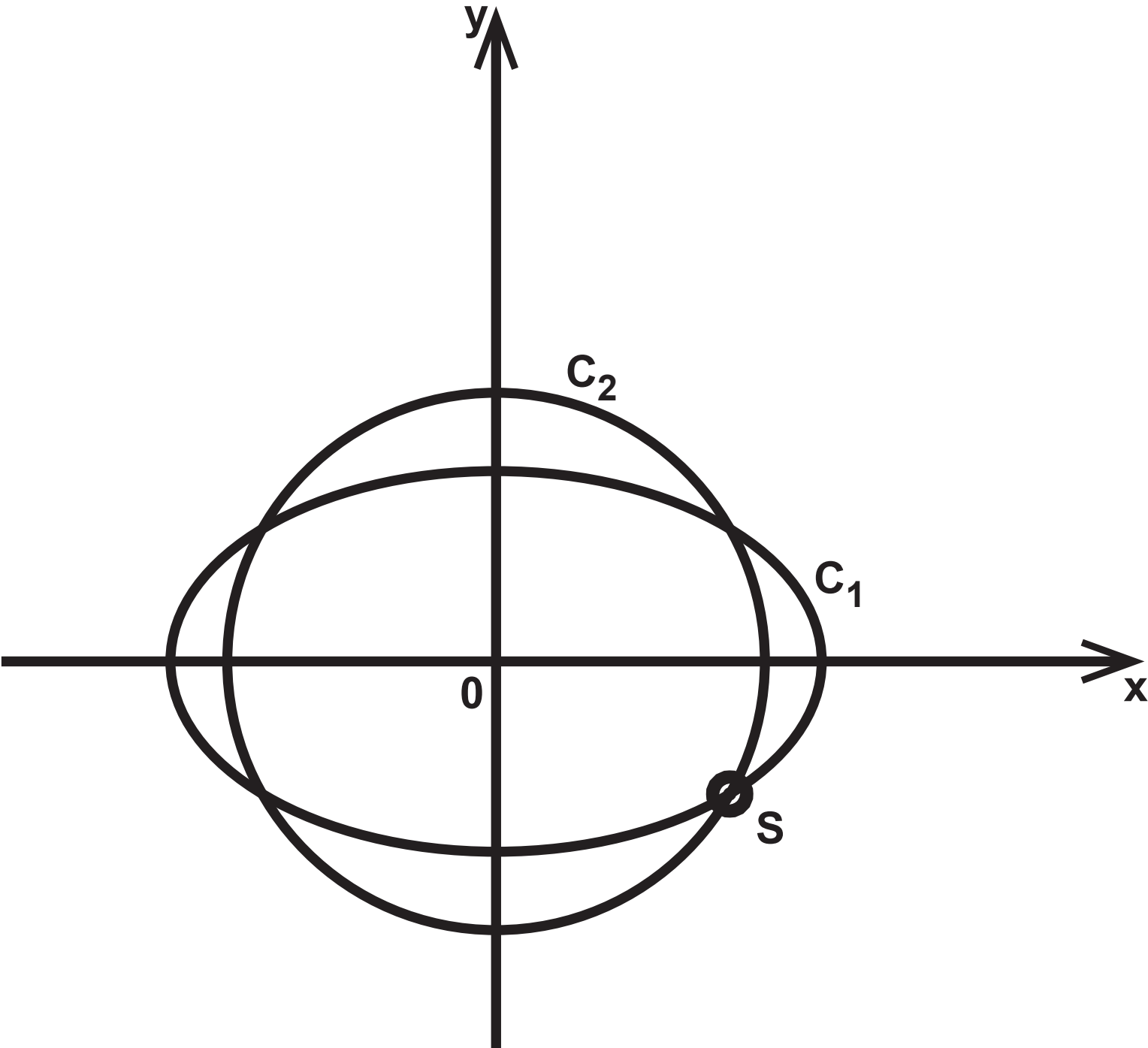
Question 2

Time (s)	Speed (m s ⁻¹)
0	2
5	5
10	10
15	18
20	28
25	42

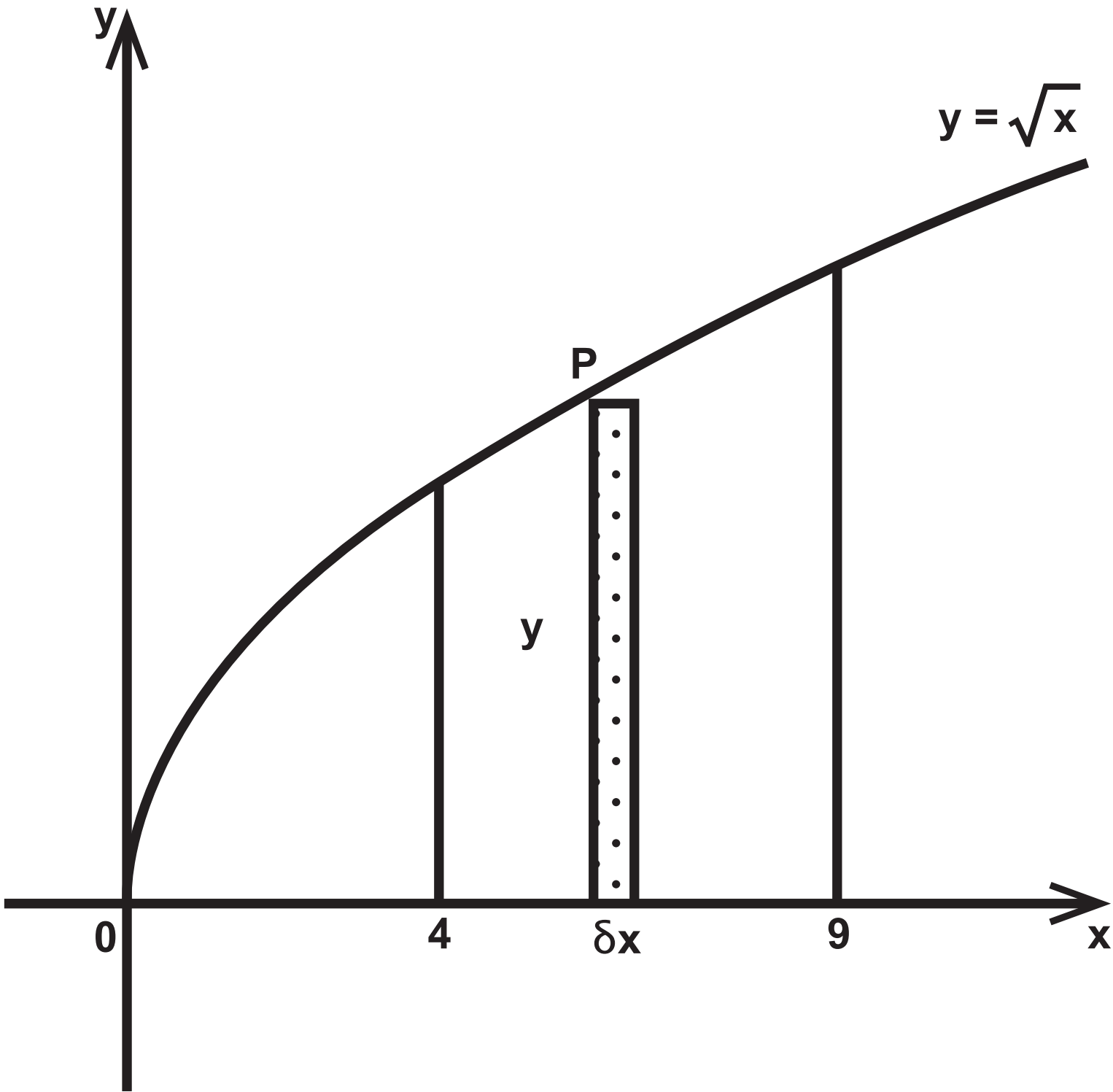
Question 3



Question 4



Question 5



Question 6

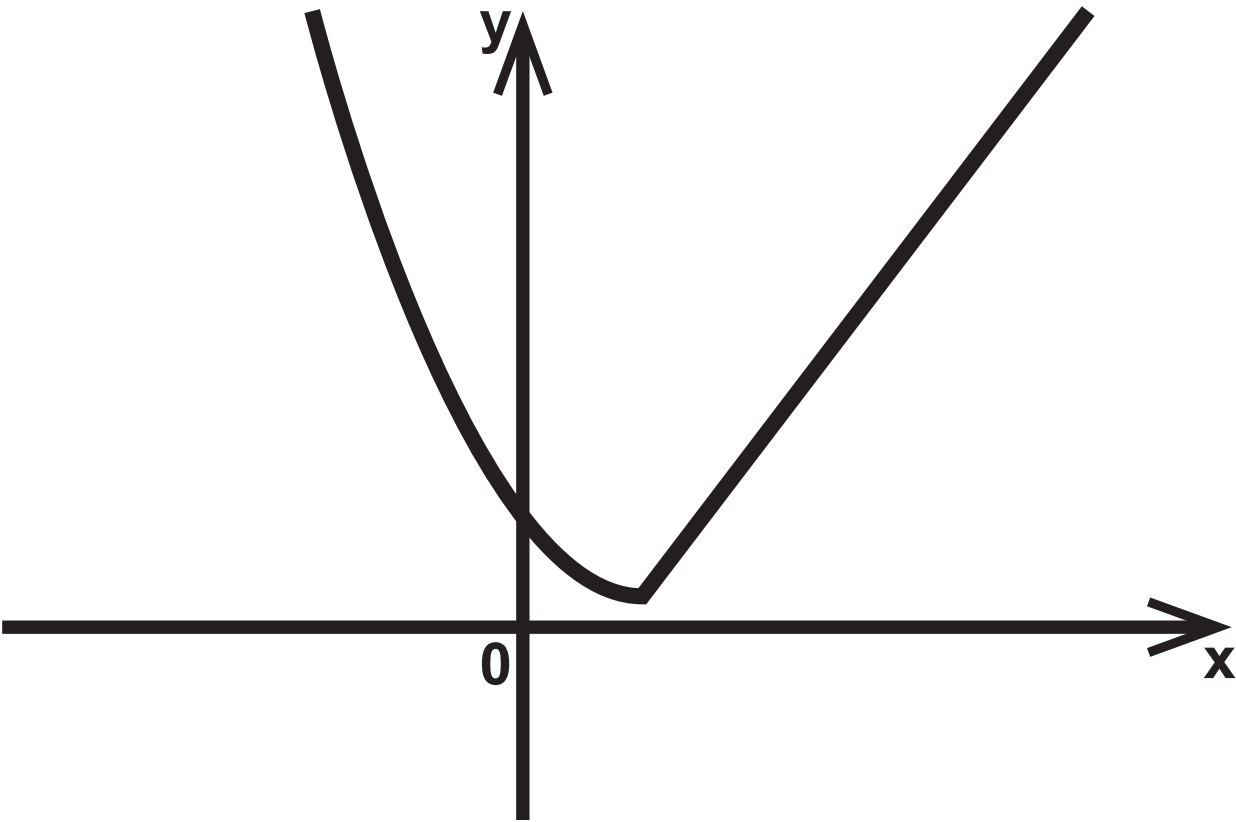


Diagram 1

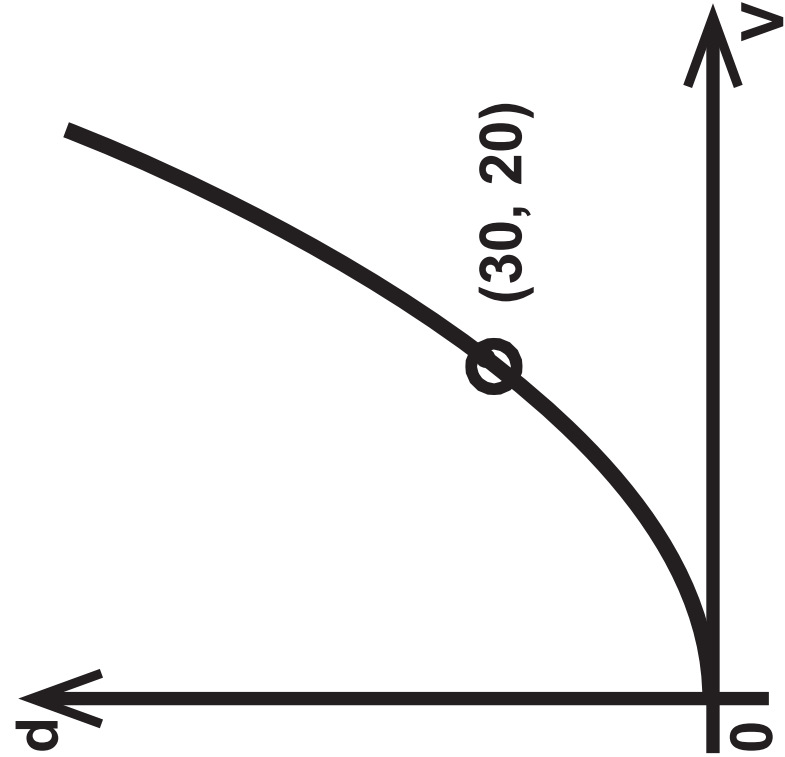
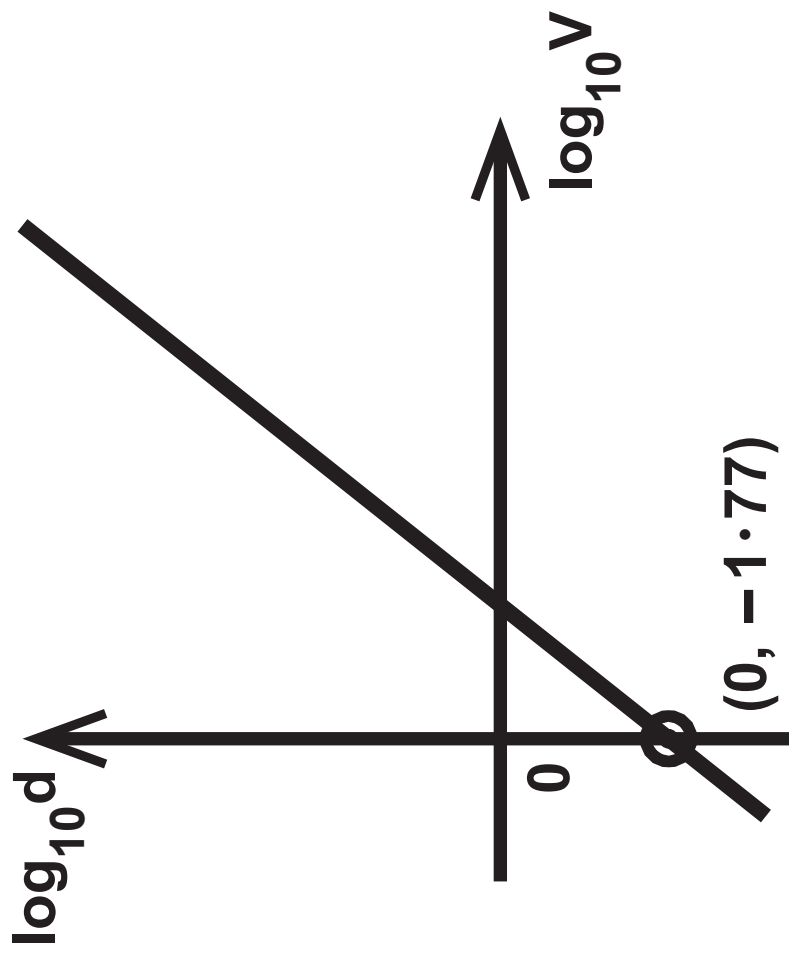
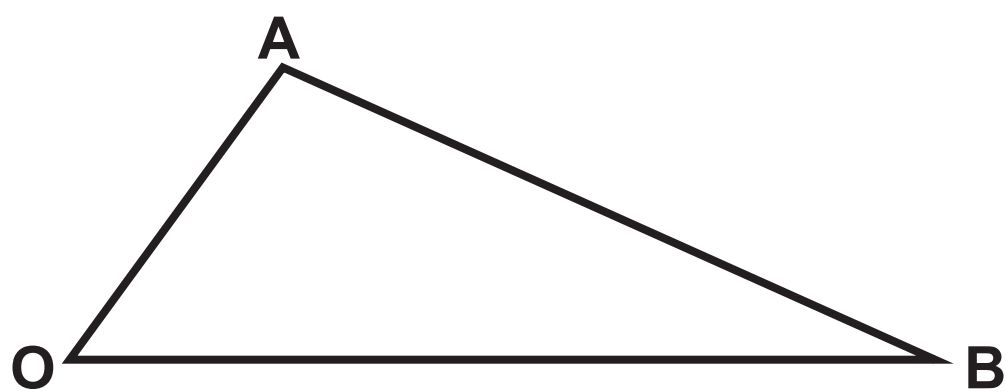


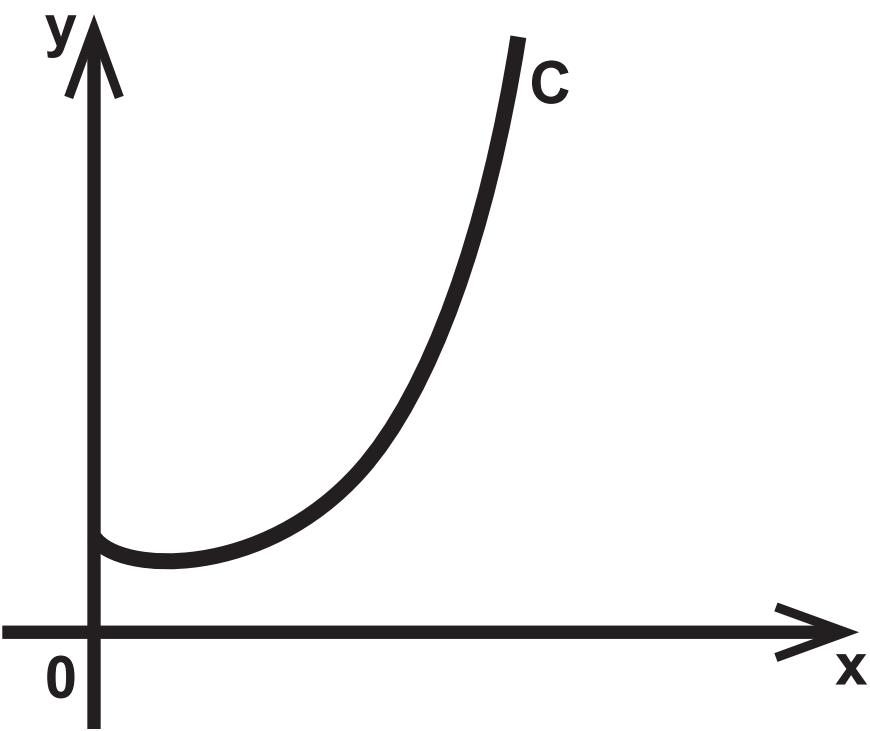
Diagram 2



Question 10



Question 11



Question 13

[A sphere of radius r has volume $\frac{4}{3}\pi r^3$ and surface area $4\pi r^2$]

